



GAT MONTHLY MEMBERSHIP PROGRESS REPORT

Results as of: 2/29/2024

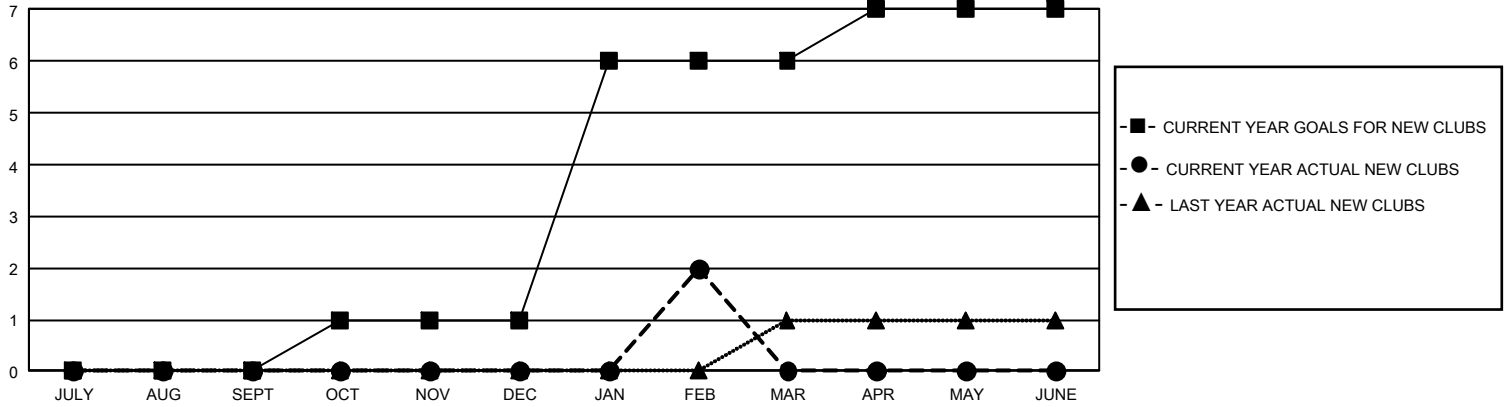
GMT Constitutional Area 5 - J, Group H

REPORT DOES NOT INCLUDE CLUBS IN UNDISTRICTED AREAS.

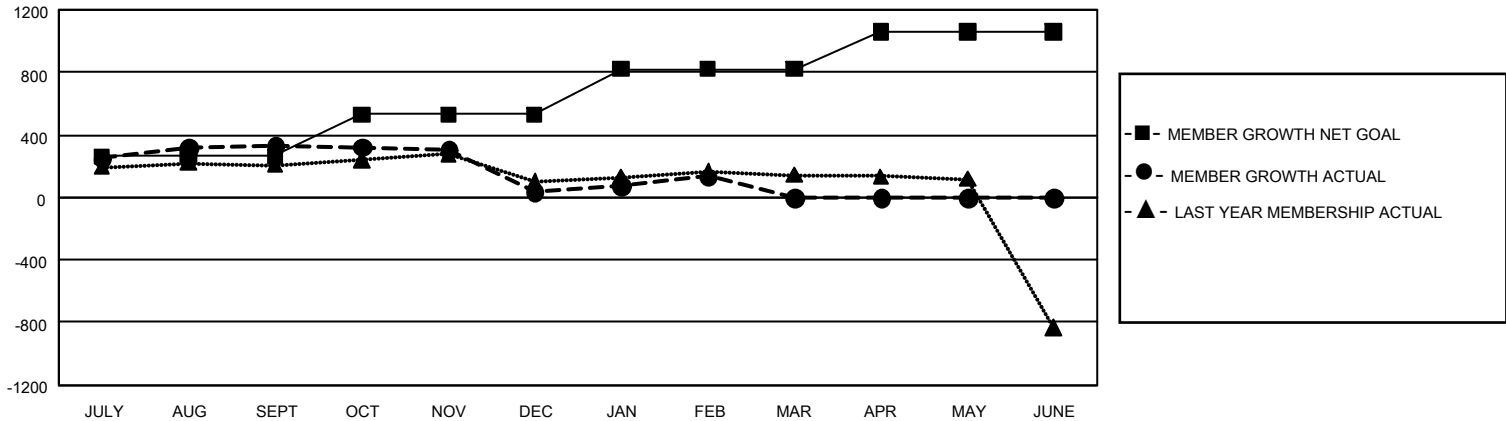
Clubs			
RESULTS FOR 2023-2024			
QUARTER	NEW CLUB GOAL	NEW CLUBS	DROPPED CLUBS
JULY/AUG/SEPT	0	0	0
OCT/NOV/DEC	3	0	0
JAN/FEB/MAR	15	2	0
APR/MAY/JUNE	3	0	0

Members			
RESULTS FOR 2023-2024			
QUARTER	MEMBER GROWTH NET GOAL	MEMBER GROWTH ACTUAL	DROPPED MEMBERS ACTUAL (including transfers)
JULY/AUG/SEPT	262	543	189
OCT/NOV/DEC	270	202	485
JAN/FEB/MAR	290	251	152
APR/MAY/JUNE	238	0	0

GOALS AND ACTUAL NEW CLUBS CUMULATIVE



GOALS AND ACTUAL MEMBERS CUMULATIVE



DROPPED CLUBS: 0	284 CLUBS OF 387 ADDED 1 OR MORE NEW MEMBERS	<u>GENDER DISTRIBUTION</u>	
<u>DROPPED MEMBERS</u>		MALE	13,510 (74.47%)
DECEASED	91	FEMALE	4,631 (25.53%)
CLUB CANCELLED	0	NON BINARY	0 (0.00%)
OTHER	735	PREFER NOT TO ANSWER	0 (0.00%)
TOTAL	826	TOTAL FAMILY UNIT MEMBERS	7,717
	CLICK HERE FOR CUMULATIVE MEMBERSHIP DATA	FAMILY MEMBERS PAYING HALF DUES	4,212